



# OWLSMART.i

## SMART INTELLIGENCE

SMART OBSERVATION WITH LOW SIGNATURE

- Information gathering
- Remote multi-targets
- Agile deployment
- Permanent surveillance

# OWLSMART.i

## Smart intelligence

OwlSmart.i is an innovative means of gathering information remotely and discretely in order to trace presence in areas of interest. In addition to its self-powered capability and its encrypted communication, OwlSmart.i offers modular and scalable configurations.

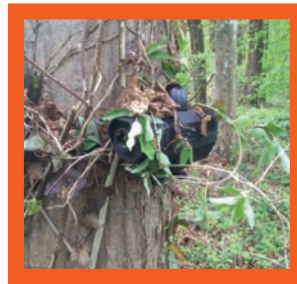
Derived from a French program developed jointly with EXENSOR® for Intelligence purposes, the OwlSmart.i solution integrates a common mesh radio network with:

- a set of self-powered ruggedized sensors and cameras: they can be selected among infrared passive barriers, acoustic, seismic and electromagnetic sensors, as well as thermal, low-light level and visible cameras.
- a tactical command and control computer (C2)

### In the operational field

The wireless features allow users to freely place elements of the system in a «cell» of typically 1km radius at several points of interest. The scenes can be monitored up to 15km away. Several areas can be supervised by a common computer.

OwlSmart.i allows 10 days of operations without any human intervention inside the cell.



### Technical specifications

#### Passive Infrared Barrier

- Human: 75m
- Vehicle: 125m

#### Acoustic-Seismic Sensor

- Human: 30m
- Vehicle: 100m

#### InfraRed & Low-Light Level Cameras

- Human Detection: 500m
- Human Identification: 75m

#### Recorder & Radio Relay

#### Environmental Conditions

- -32°C to +50°C
- IP67 standard

**Detection Error Rate:** < 1%



### MODULAR & SCALABLE

- A subset of cameras and sensors selected among OwlSmart equipment
- Several spots monitored in a given area
- Up to 3 areas supervised simultaneously
- Self-healing network via relay functions (Radio mesh)

### ENERGY-FREE & QUICK INSTALLATION

- Battery power to supply 10 days of uninterrupted operation
- Wireless system

### DEPENDABLE

- Operational in the French Forces
- Ruggedized, all-weather
- Detection error rate < 1%

### LOW SIGNATURE

- Full passive sensors
- Camouflages to natural surroundings
- Controlled radio emissions: real-time data or on-demand

### IDENTIFICATION

- 24/7 capability
- Doubt removal

